

# IVRY

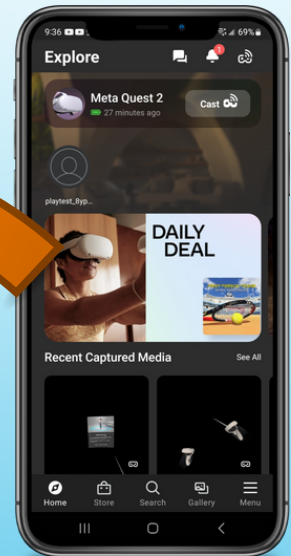
TECHNOLOGIES

## CASTING TO MOBILE DEVICE

1

### SYNC DEVICE'S WI-FI

- Ensure that both your VR headset and the device you want to cast to are connected to the same Wi-Fi network.



2

### PUT ON HEADSET

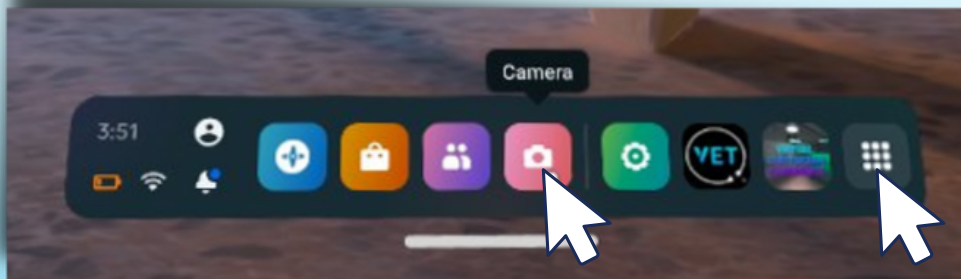


### CASTING TO MOBILE DEVICE

3

#### NAVIGATE TO CASTING

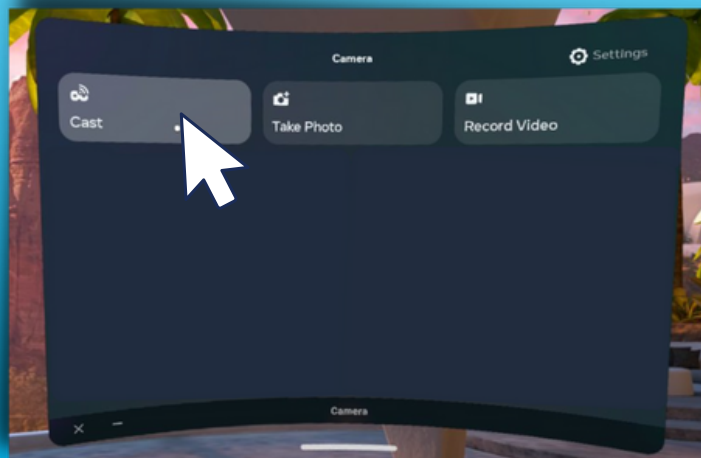
- Select the "Camera" app.
- It may be found in app library or quick reference.



4

#### CLICK CAST

- Click the "Cast" button in the upper left corner.





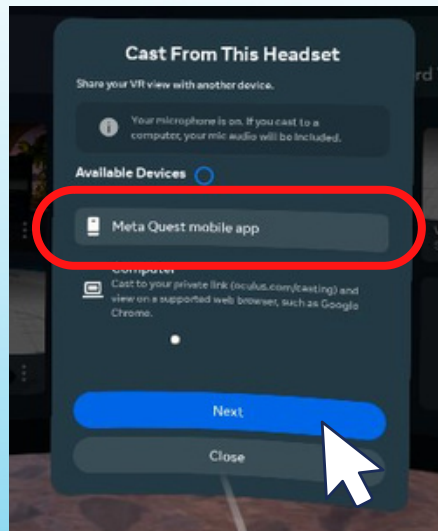
TECHNOLOGIES

## CASTING TO MOBILE DEVICE

5

### SELECT MOBILE DEVICE

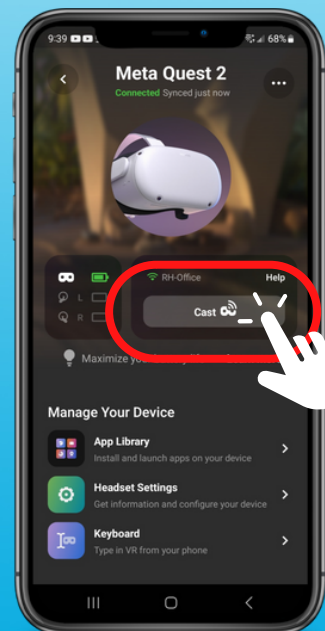
- Select the desired mobile device for casting.
- Click Next.



6

### OPEN META QUEST APP

- Open the Meta Quest App
- Tap "Cast"





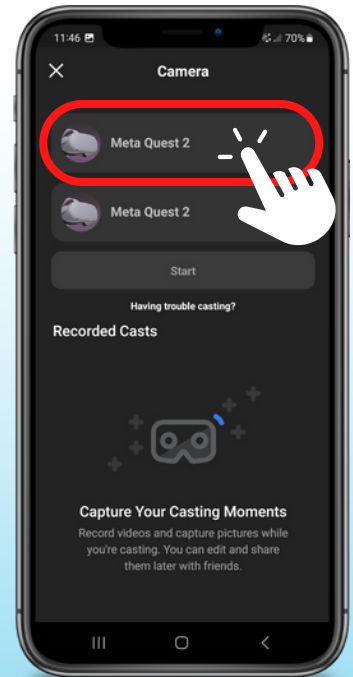
TECHNOLOGIES

## CASTING TO MOBILE DEVICE

7

### SELECT HEADSET

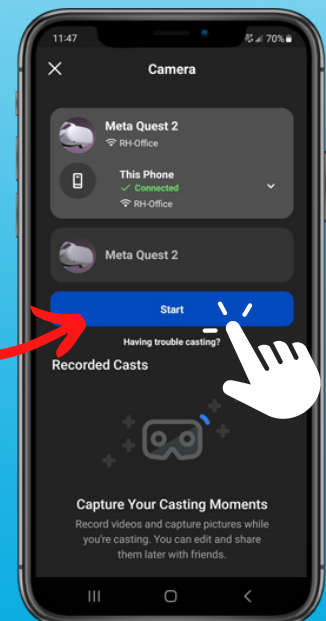
- Locate and tap the headset you would like to pair.



8

### CLICK START

- You will see the devices connect after you tap.
- Tap "Start".



9

#### CASTING WILL BEGIN

- Casting will automatically begin on the mobile device.
- This may take a moment to sync.

